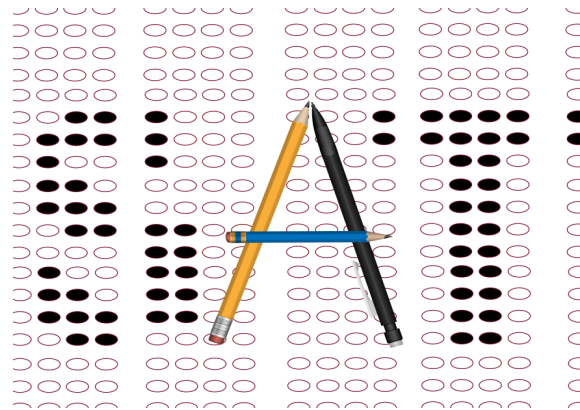


Students will become familiar with:

- The content of the SAT
- The SAT procedures
- The types of questions you can expect to find on the SAT
- Suggestions on how you might approach the questions
- General test-taking strategies



Students will learn about the content of each section of the test.



**Evergreen Park  
Community High School**

9901 South Kedzie Avenue  
Evergreen Park, IL 60805

D. Schillo, Curriculum Director  
[www.evergreenpark.org](http://www.evergreenpark.org)  
Phone: 708-398-1280



# SAT INVITATIONAL

## Evergreen Park Community High School

# SAT prep

“Practice does not make perfect. Only perfect practice makes perfect.”

Vince Lombardi

## SAT Invitational

Evergreen Park Community High School is proud to present an intense SAT preparation program. This program will only be open to EPCHS students and will be offered for the nominal fee of \$25.



Students who participate in a program such as this are more likely to be successful on the SAT and feel more at ease on test day. Students will become familiar with the format and content of the test, review material and learn test-taking strategies.

The sessions will take place in the evening from 6:00-8:00 p.m. on the following dates:

December 4, 2017

December 11, 2017

January 16, 2018

January 22, 2018

January 29, 2018

February 5, 2018

February 12, 2018

February 20, 2018

February 26, 2018

March 6, 2018

March 12, 2018

March 19, 2018

March 26, 2018 TBD

### Areas of Concentration

Reading

Science

Math

English

### SAT Invitational Sign-Up Form

Please detach and return to Mrs. Sekula in the PPS Center with a \$25.00 check made payable to EPCHS by **November 27, 2017**.

Student Name

Address

City, State

Parent Contact

Parent Phone

English Teacher

Questions? Send e-mail to **dschil-**



Evergreen Park  
Community High School

9901 South Kedzie Avenue  
Evergreen Park, IL 60805

D. Schillo, Curriculum Director